

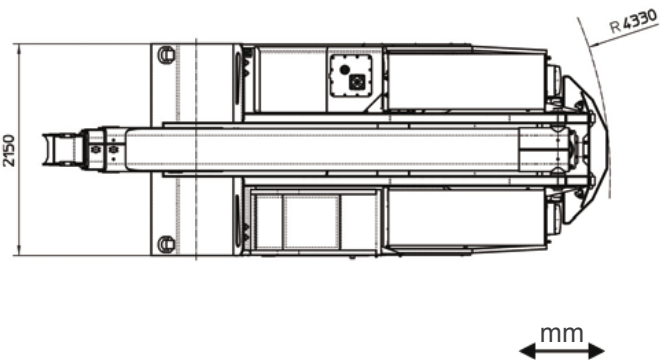
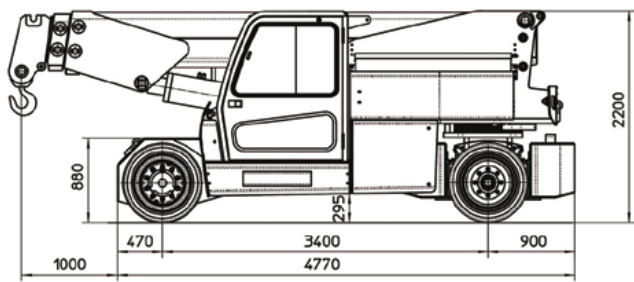
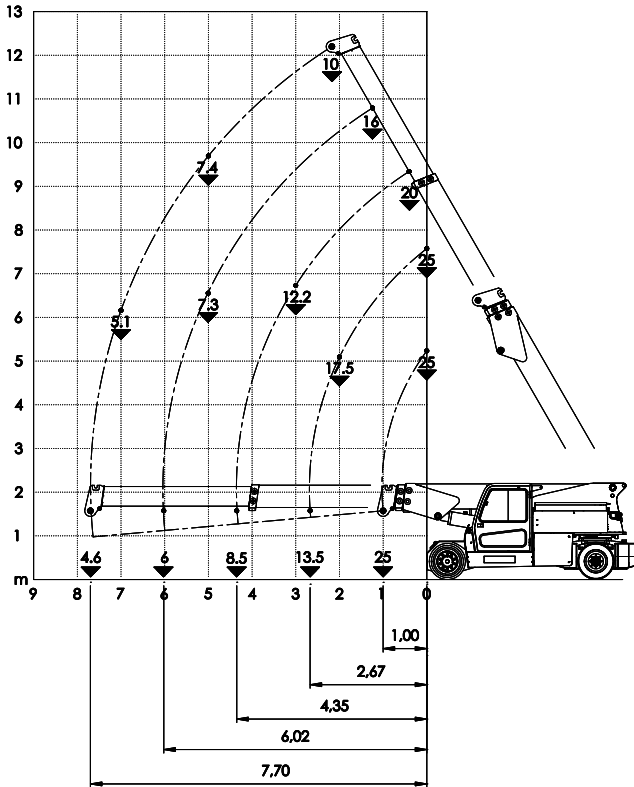


Edition: May 2015
© 2015 JMG Cranes S.r.l. - All rights reserved

MC 250 - Max capacity 25 t

Electric mobile crane

MC250 25 t



- FRAME:** JMG designed and manufactured, box type, torsion resistant design of high strength structural steel
- BOOM:** Made of moulded and welded quality steel plate, comprised of a base unit and two hydraulic extensions. The direction and the extension are obtained hydraulically by telescopic cylinders (proportional telescopic boom)
- TRACTION MOTOR:** n°2 Electric motor 12 kW 96V AC, insulation class H
- MOTOR PUMP:** Electric motor 1x23 kW 96V AC, 1x16 kW 96V AC, insulation class H
- BATTERY:** 96 V 1125 Ah - battery charging indicator
- POWER DRIVE:** Electric speed control, MOSFET type
- TRANSMISSION:** Front axle by n°2 wheel gears
- WHEELS:** Front axle: n°4 superelastic 355x50-20"
Rear axle: n°2 superelastic 355x50-20"
- BRAKING:** Service brake: hydraulic pedal operated on all wheels. Parking and emergency brake: hydraulic with automatic control on all wheels
- STEERING:** On the rear wheels by hydraulic motor controlled by hydrostatic power steering with load sensing priority valve. The supply of the hydrostatic system is guaranteed by the 16 kW electric gear pump system of the crane
- HYDRAULIC SYSTEM:** Powered by a 23 kW silenced gear pump. Actuators controlled by electro-proportional distributor with electronic joystick. Filter and safety valve. 23 MPa max. working pressure

- SAFETY DEVICES:** Electronic load moment indicator
- OPTIONAL EQUIPMENT:** Hydraulic winch - Jib - Non marking tyres - Man basket
(at extra charge) - Hydraulic chain hoist - Cable remote control - Radio remote control - Hydraulic forks

CRANE CLASSIFICATION ACCORDING TO UNI ISO 4301-1	A3
EU STANDARD CE	2006/42 CE MD 2004/108 CE EMC 2006/95 CE LVD 2000/14/CE And subsequent modifications
REFERENCE STANDARDS	EN13000:2010 UNI ISO 4301-2:2011 And subsequent modifications
TRACTION	Electric
BOOM ACTIVATION	Hydraulic
POWER TYPE	Electric battery
MAX. CAPACITY (kg)	25.000
CRANE TOTAL WEIGHT (kg)	24.400
removable counterweight	4.600
BOOM ANGLE TOPSIDE (°)	60
BOOM ANGLE DOWNSIDE (°)	-7